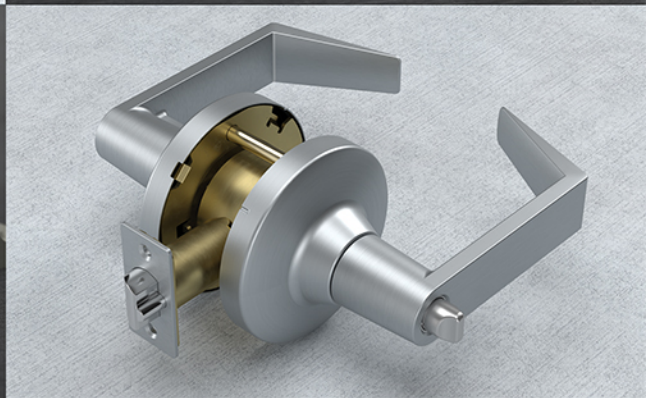
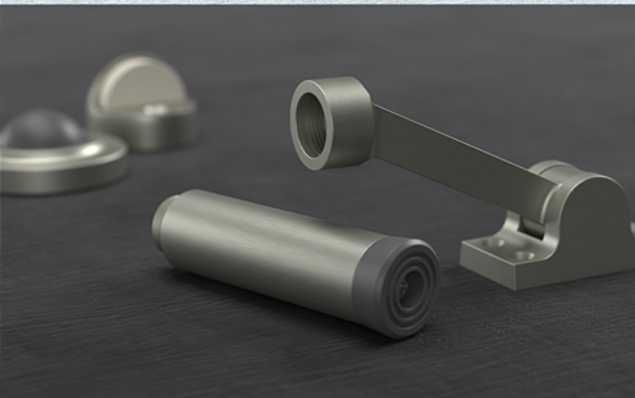
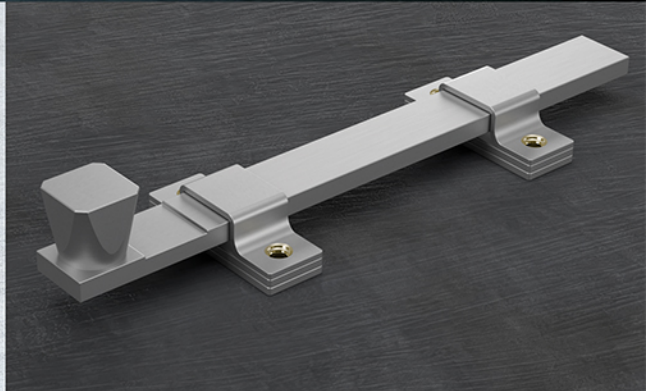




# PROFESSIONAL SERIES

COMMERCIAL GRADE DOOR HARDWARE



Bumpers | Stainless Steel Grab Bars | Pull, Push & Kick Plates | Door Closers & Accessories | Grade 1 Locks | Grade 2 Locks | Exit Devices | Commercial Hinges

[www.DELTANA.net](http://www.DELTANA.net)




**DHK4 KICKDOWN HOLDER**

- ◇ Solid Brass
- ◇ Overall Size 4"
- ◇ Heavy Duty
- ◇ Bracket Size 1-1/4"x 2"
- ◇ Bumper Diameter 1"
- ◇ Overall Projection 2-1/8"


**DHK7 KICKDOWN HOLDER**

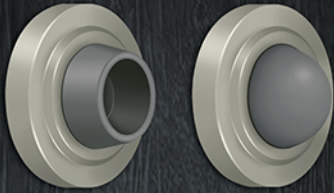
- ◇ Solid Brass
- ◇ Overall Size 7"
- ◇ Heavy Duty
- ◇ Bracket Size 1-1/8"x 2-1/4"
- ◇ Bumper Diameter 1"
- ◇ Overall Projection 3"

**DSF444 / SAHF358 / DSF600  
DSF630 / DSF800 / DSF830**
**FLOOR BUMPERS**

- ◇ Solid Brass
- ◇ Heavy Duty
- ◇ Floor mount with cement anchor included
- ◇ 6" Model available w/ or w/o hold-open feature
- ◇ 8" Model available w/ or w/o hold-open feature

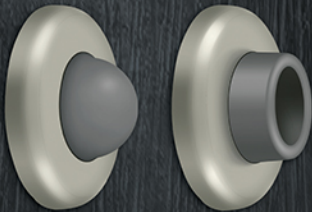





**WBC238 / WB238**

## ROUND WALL BUMPERS

- ◇ Solid Brass
- ◇ Overall Diameter 2-3/8"
- ◇ Wide array of finishes available
- ◇ Concave & Convex designs available


**WBC250 / WB250**

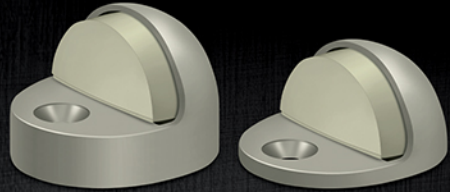
## ROUND WALL BUMPERS

- ◇ Solid Brass / Stainless Steel
- ◇ Overall Diameter 2-1/2"
- ◇ Wide array of finishes available
- ◇ Concave & Convex designs available

**DSHP916 / DSLP316**

## DOME FLOOR BUMPERS

- ◇ Solid Brass
- ◇ 1-3/8" High Profile & 1" Low Profile available
- ◇ Wide array of finishes available


**6SSB32D / 8SSB32D / 10SSB32D / 12SSB32D**

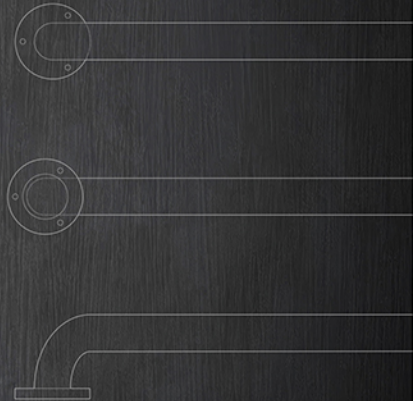
## STAINLESS STEEL SECURITY BOLTS HD

- ◇ Stainless Steel (US32D)
- ◇ Heavy duty grade security
- ◇ 6", 8", 10" & 12" lengths available



**GB18 / GB24 / GB30 / GB36 / GB42**  
GRAB BARS

- ◇ Stainless Steel (US32D)
- ◇ Grab Bars are ADA compliant
- ◇ 1-1/2" Grab Bars Diameter
- ◇ Overall Projection 3-1/2"
- ◇ Inside Projection 2"
- ◇ Concealed Screws

**GB42CP** GRAB BAR

- ◇ Stainless Steel (US32D)
- ◇ Grab Bar is ADA compliant
- ◇ 1-1/2" Grab Bar Diameter
- ◇ Overall Projection 3-1/2"
- ◇ Inside Projection 2"
- ◇ Concealed Screws
- ◇ Center Post





**PPH4016** PULL PLATE

- ◇ Stainless Steel (US32D)
- ◇ Plate 4"x16"
- ◇ Handle overall length 8-5/8"
- ◇ Handle center-to-center 7-7/8"
- ◇ Plate Gauge 1.2mm
- ◇ Overall Projection 2-5/8"
- ◇ Inside Projection 1-7/8"

**PPH3515 / PP3520 / PPH4016**  
PUSH PLATES

- ◇ Stainless Steel (US32D)
- ◇ Plate Gauge 1.10mm
- ◇ Custom drilled holes available
- ◇ PPH3515 overall 3-1/2"x 15"
- ◇ PPH3520 overall 3-1/2"x 20"
- ◇ PPH4016 overall 4"x 16"

**KP634 / KP834 / KP1034**  
KICK PLATES

- ◇ Stainless Steel (US32D)
- ◇ Plate Gauge 1.10mm
- ◇ KP634 overall 6"x 34"
- ◇ KP834 overall 8"x 34"
- ◇ KP1034 overall 10"x 34"



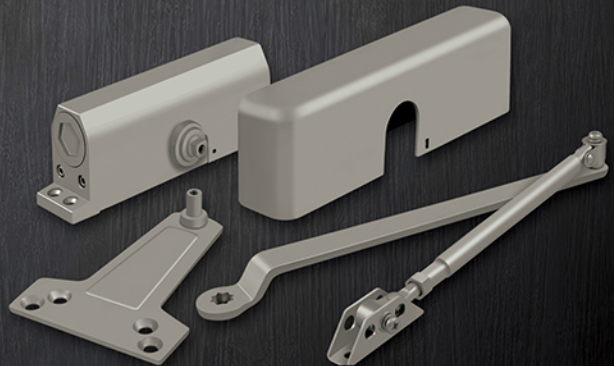
### DC50 DOOR CLOSER

- ◇ Die-Cast Aluminum body & Stamped Steel arm
- ◇ Spring power size #2
- ◇ Maximum door weight 75 LBS
- ◇ Adjustable closing speed
- ◇ Adjustable latching speed
- ◇ Universal handing
- ◇ High lubricity fluid
- ◇ Parallel bracket included
- ◇ Small body profile
- ◇ Ideal for Interior Doors
- ◇ Available Finishes are Aluminum, Duro, Gold and White



### DC70 DOOR CLOSER

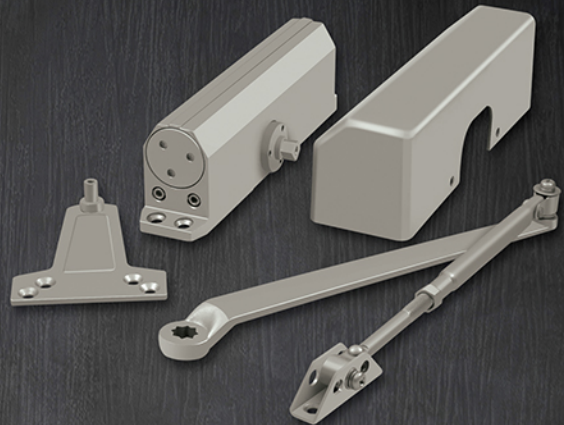
- ◇ Die-Cast Aluminum body & Stamped Steel arm
- ◇ UL and CUL listed
- ◇ Spring power size #3
- ◇ Maximum door weight 140 LBS
- ◇ Adjustable closing speed
- ◇ Adjustable latching speed
- ◇ Adjustable backcheck function
- ◇ Universal handing
- ◇ High lubricity fluid
- ◇ Parallel bracket, cover and sex-bolts included
- ◇ Available finishes are Aluminum, Duro, Gold and White





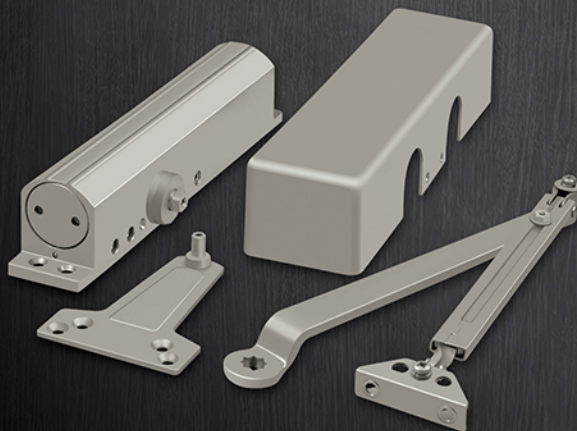
## DC10 DOOR CLOSER

- ◇ Die-Cast Aluminum body & Forged Steel arm
- ◇ UL and CUL listed, UL 10C fire rated
- ◇ Factory tested to exceed ANSI A 156.4 Grade 1
- ◇ Door Closer is ADA compliant
- ◇ Compliant with ANSI A 117.1
- ◇ High lubricity fluid
- ◇ Spring power size 1 to 4
- ◇ Maximum door weight 180 LBS
- ◇ Adjustable latching speed
- ◇ Adjustable sweeping speed
- ◇ Adjustable backcheck functions
- ◇ Universal handing
- ◇ Parallel bracket, cover and sex bolts included
- ◇ Available finishes are Aluminum, Duro, Gold and White



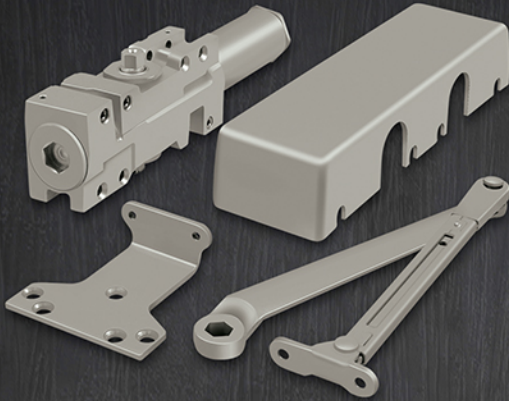
## DC90 DOOR CLOSER

- ◇ Die-Cast Aluminum body & Stamped Steel arm
- ◇ UL and CUL listed
- ◇ Factory tested to exceed ANSI A 156.4 Grade 1
- ◇ Door Closer is ADA compliant
- ◇ Compliant with ANSI A 117.1
- ◇ High lubricity fluid
- ◇ Spring power size 1 to 6
- ◇ Maximum door weight 330 LBS
- ◇ Adjustable latching speed
- ◇ Adjustable closing speed
- ◇ Adjustable backcheck functions
- ◇ Universal handing
- ◇ Parallel bracket, cover and sex bolts included
- ◇ Available finishes are Aluminum, Duro, Gold and White





### DC40 DOOR CLOSER



- ◇ Cast-Iron body and Forged Steel arm.
- ◇ UL and CUL listed, UL 10C fire rated.
- ◇ ANSI A 156.4 Grade 1 certified
- ◇ Compliant with ANSI A 117.1
- ◇ Door Closer is ADA compliant
- ◇ High lubricity fluid
- ◇ Spring power size 1 to 6
- ◇ Maximum door weight 330 LBS
- ◇ Adjustable closing speed
- ◇ Adjustable latching speed
- ◇ Adjustable backcheck functions
- ◇ Universal handing
- ◇ Parallel bracket, cover and sex bolts included
- ◇ Available finishes are Aluminum, Duro, Gold and White



### DCCA4041 / DCHA4041 / DCHA1050 HOLD OPEN & CUSHION ARMS

- ◇ Forged Steel
- ◇ DCCA4041 Cushion arm for DC40
- ◇ DCHA4041 Hold open arm for DC40
- ◇ DCHA1050 Hold open arm for DC10

### DP4041S / DP4041P

#### CLOSERS DROP PLATES

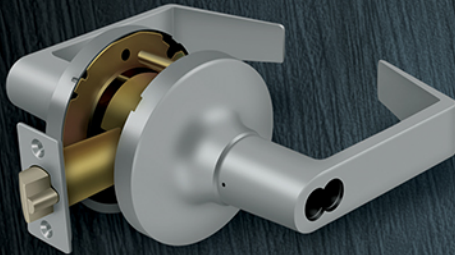
- ◇ Forged Steel
- ◇ Plates Gauge 5.08mm
- ◇ DP4041P For parallel arm installation  
Dimensions 13" x 5"
- ◇ DP4041S For standard arm installation  
Dimensions 13" x 3-5/8"





**CL500FLC / CL501FLC  
CL502FLC / CL504FLC / CL509FLC**
**CLARENDON GRADE 1**


- ◇ Non-handed clutch system lever
- ◇ Door thickness 1-3/8" ~ 2"
- ◇ Backset 2-3/4" latch UL listed included
- ◇ ANSI Certified strike
- ◇ Fixed Through-bolts
- ◇ UL Listed latch with 1/2" throw
- ◇ Entry, Privacy, Passage, Storeroom & Classroom functions available
- ◇ 2-3/8" backsets available upon request


**CL500FRCNC / CL504FRCNC / CL509FRCNC**
**CLARENDON GRADE 1 IC**

- ◇ Locks are prepped for a small format IC core
- ◇ Compatible with Schlage, Best, Falcon and Arrow cores
- ◇ Locks are supplied without cylinder core
- ◇ Entry, Storeroom & Classroom functions available
- ◇ 2-3/8" backsets available upon request


**CL200LM / CL210LM / CL200LMIC**
**DEADBOLTS GRADE 1**

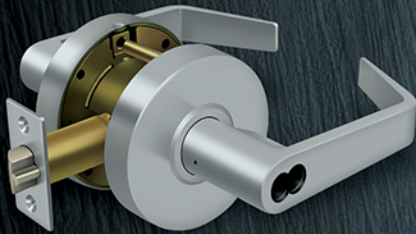

- ◇ Backset 2-3/4"
- ◇ UL Listed latch with 1" throw
- ◇ Strike with dust box & frame reinforcer
- ◇ Solid brass 6-pin cylinder "C" Keyway
- ◇ 2-3/8" backsets available upon request





**CL500EVC / CL501EVC / CL502EVC  
CL504EVC / CL509EVC / CL515EVC**
**CLARENDON GRADE 2**


- ◇ Non-handed clutch system lever
- ◇ Door thickness 1-3/8" ~ 2"
- ◇ Backset 2-3/4" latch included
- ◇ UL Listed latch with 1/2" throw
- ◇ ANSI Certified strike
- ◇ Solid Brass 6-pin Cylinder "C" Keyway
- ◇ Removable Through-bolts
- ◇ Entry, Privacy, Passage, Storeroom, Classroom & Dummy functions available
- ◇ 2-3/8" backset available upon request


**CL500ECCNC / CL504ECCNC / CL509ECCNC**
**CLARENDON GRADE 2 IC**

- ◇ Locks are prepped for a small format IC core
- ◇ Compatible with Schlage, Best, Falcon and Arrow Cores
- ◇ Locks are supplied without cylinder core
- ◇ 2-3/8" backset available upon request
- ◇ Entry, Classroom and Storeroom interchangeable core functions available
- ◇ Other specifications same as standard core levers


**CL200LA / CL210LA / CL200LAIC**
**DEADBOLTS GRADE 2**

- ◇ Backset 2-3/4" latch included
- ◇ UL Listed latch with 1" throw
- ◇ Strike: 1-1/8" x 2-3/4" no lip
- ◇ Solid Brass 6-pin cylinder "C" Keyway
- ◇ 2-3/8" backset available upon request
- ◇ Single, Double and Interchangeable Core (IC) functions available



AVAILABLE




**CL600EVC / CL601EVC  
CL602EVC / CL604EVC / CL609EVC**
**CURVED GRADE 2**

- ◇ Non-handed clutch system lever
- ◇ Door thickness 1-3/8" ~ 2"
- ◇ Backset 2-3/4" latch included
- ◇ UL Listed latch with 1/2" throw
- ◇ ANSI Certified strike
- ◇ 6-pin Cylinder standard "C" Keyway
- ◇ Removable Through-bolts
- ◇ Entry, Privacy, Passage, Storeroom & Classroom functions available
- ◇ 2-3/8" backset available upon request


**CL100EAC / CL101EAC / CL102EAC  
CL104EAC / CL109EAC / CL115EAC**
**ROUND KNOBS GRADE 2**

- ◇ Door thickness 1-3/8" ~ 1-3/4"
- ◇ Backset 2-3/4" latch included
- ◇ UL Listed latch with 1/2" throw
- ◇ ANSI Certified strike
- ◇ Solid Brass 6-pin Cylinder "C" Keyway
- ◇ Entry, Privacy, Passage, Storeroom, Classroom & Dummy functions available
- ◇ 2-3/8" backset available upon request


**CL300ILC / CL308ILC**
**INTERCONNECTED GRADE 2**

- ◇ Door thickness 1-3/8" ~ 1-3/4"
- ◇ Backset 2-3/4" latch included
- ◇ UL Listed chrome plated latch bolt with 1/2" throw
- ◇ UL Listed deadbolt latch with 1/2" throw
- ◇ Solid Brass 6-pin Cylinder "C" Keyway
- ◇ Non-clutch
- ◇ Entry & Passage functions available
- ◇ 2-3/8" backset available upon request





**CL700EL / CL701EL / CL702EL**

## STRAIGHT LIGHT DUTY



- ◇ Non-handed clutch system lever
- ◇ Door thickness 1-3/8" ~ 1-3/4"
- ◇ Backset 2-3/4" latch included
- ◇ UL Listed latch with 1/2" throw
- ◇ Solid Brass 6-pin Cylinder "C" Keyway
- ◇ Removable Through-bolts
- ◇ Entry, Privacy & Passage functions available
- ◇ 2-3/8" backset available upon request

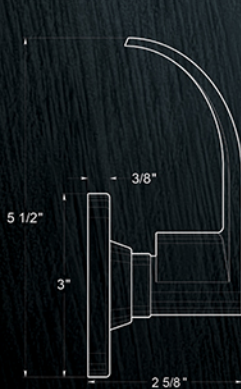
**CL400EL / CL402EL / CL401EL**

## CURVED LIGHT DUTY

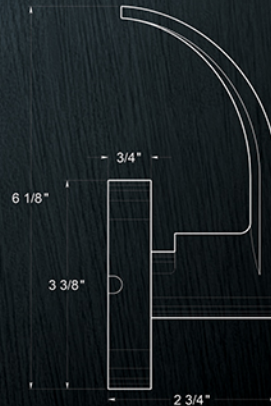


- ◇ Non-handed clutch system lever
- ◇ Door thickness 1-3/8" ~ 1-3/4"
- ◇ Backset 2-3/4" latch included
- ◇ UL Listed latch with 1/2" throw
- ◇ Solid Brass 6-pin Cylinder "C" Keyway
- ◇ Removable Through-bolts
- ◇ Entry, Privacy & Passage functions
- ◇ 2-3/8" backset available upon request

## GRADE 2 LIGHT DUTY VS GRADE 2 STANDARD



GRADE 2 LIGHT DUTY



GRADE 2 STANDARD



AVAILABLE




**PDR36UL**

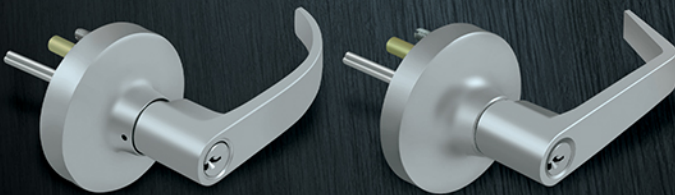
EXIT DEVICE UL FIRE-RATED

- ◇ UL Listed
- ◇ 3 Hour Fire-Rated
- ◇ Stainless Steel (US32D Finish)
- ◇ 36" Rim installation available

**PDR36 / PDR48**

EXIT DEVICES UL LISTED

- ◇ UL Listed
- ◇ Allen-key dogging
- ◇ Cold Roll Steel
- ◇ Bar can be cutdown to 30"
- ◇ 36" & 48" Rim installations available


**LTED80LS / LTED80LP**  
**LTED80LST / LTED60LST**

TRIMS FOR EXIT DEVICES

- ◇ Steel & Zinc
- ◇ Clarendon & Curved designs available
- ◇ US10B & US26D finishes available
- ◇ Entry, Storeroom & Passage functions available

**PDVR36UL**

EXIT DEVICE UL LISTED &amp; FIRE-RATED



- ◇ UL Listed
- ◇ 3 Hour Fire-Rated
- ◇ Stainless Steel (US32D Finish)
- ◇ Vertical Rod installation available


**PDVR36 / PDVR48**

EXIT DEVICES UL LISTED



- ◇ UL Listed
- ◇ Cold Roll Steel
- ◇ Allen key dogging
- ◇ 36" & 48" devices available
- ◇ Vertical Rod installation available
- ◇ Maximum door height 7'






**S45 / S45BB / S45NB**
**STEEL HINGES**

- ◇ Overall Size 4-1/2" x 4-1/2"
- ◇ Heavy Duty
- ◇ Leaf Thickness 0.134"
- ◇ Options of Ball Bearing & NRP  
NRP upon request


**S55BBUSPW**
**STEEL HINGE**

- ◇ Overall Size 5" x 5"
- ◇ Heavy Duty
- ◇ Leaf Thickness 0.145"
- ◇ Ball Bearing


**SS45 / SS45N / SS45B / SS45NB**
**STAINLESS STEEL HINGES**

- ◇ Overall Size 4-1/2" x 4-1/2"
- ◇ Heavy Duty
- ◇ Leaf Thickness 0.134"
- ◇ Options of Ball Bearing & NRP


**SS55BB-SEC**
**STAINLESS STEEL HINGE**

- ◇ Overall Size 5" x 5"
- ◇ Heavy Duty
- ◇ Leaf Thickness 0.150"
- ◇ Ball Bearing & Security
- ◇ Also US15 Finish available


**DSH45**
**SPRING HINGE**

- ◇ Available in Steel & Stainless Steel
- ◇ Overall Size 4-1/2" x 4-1/2"
- ◇ Heavy Duty
- ◇ Leaf Thickness 0.134"





# COMMERCIAL GRADE DOOR HARDWARE SPECIFICATIONS

## ◆ Strikes

UL Listed ANSI 1 1/4" x 4 7/8" strike standard.  
T-Strikes: 1 1/4" x 2 3/4" sold separately.  
Deadbolts come with a no lip square 1 1/8" x 2 3/4" strike plate.

## ◆ Keying

Keying available for our complete line of commercial door hardware.

## ◆ Cylinder

Solid Brass 6-pin, Schlage C compatible keyway. Pinned 6 with two 6-pin keys standard.

## ◆ Trim

Grade 1 - fixed through-bolts  
Grade 2 - removable through-bolts

## ◆ Latch UL Approved

2 3/4" backset latch included with 1/2" throw. Drive-in latch models also sold for Grade 2. Housing is steel-zinc dichromated finish for rust resistance. 1" diameter bore is required.

\*Option of 2 3/8" backset latch is available upon request.

## ◆ Latch Face Plate

Solid Brass / Stainless Steel 2 1/4" x 1 1/8" standard.  
2 1/4" x 1" latches sold separately.

## ◆ Housing

Cold rolled steel and zinc dichromated finish for rust resistance. Door prep is a 2 1/8" bore, with 5/16" holes for through bolts.

## ◆ Interchangeable Core (IC)

Locks are prepped for a small format IC core, compatible with Schlage, Best, Falcon and Arrow cores. Locks are supplied without cylinder core.

## ◆ Clutch Function

When locked, the lever turns freely without retracting the latch to avoid damage to the mechanism. All Deltana commercial door hardware has this added function.

Universal Handing

Door Thickness Range 1 3/8" ~ 2"

Meets ANSI 156.2 Grade 1 & 2 requirements.

Deltana commercial locks and exit devices are made in Taiwan.

Schematic drawings available online.

